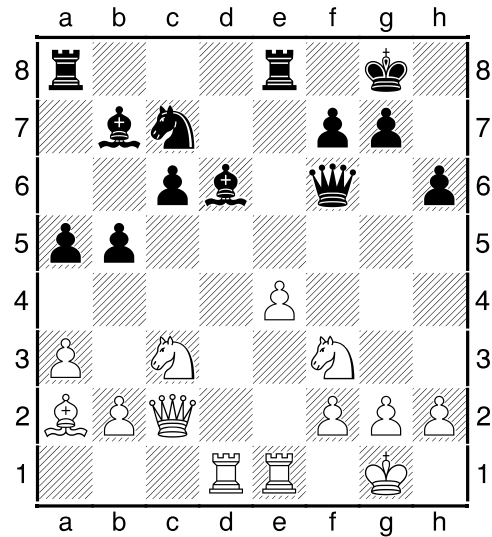
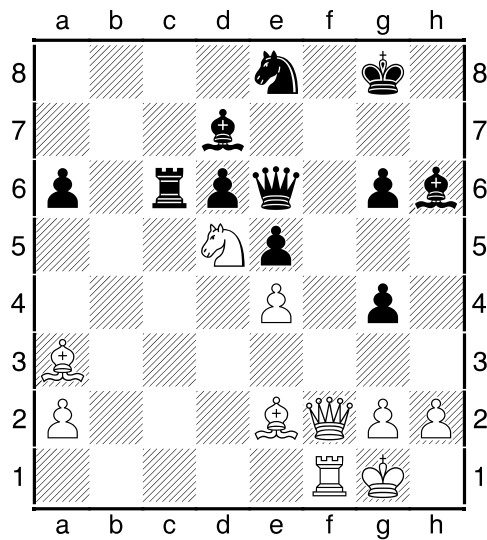


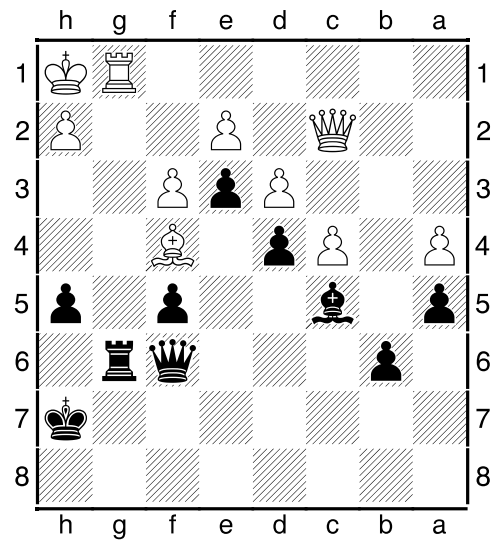
Weiß gewinnt



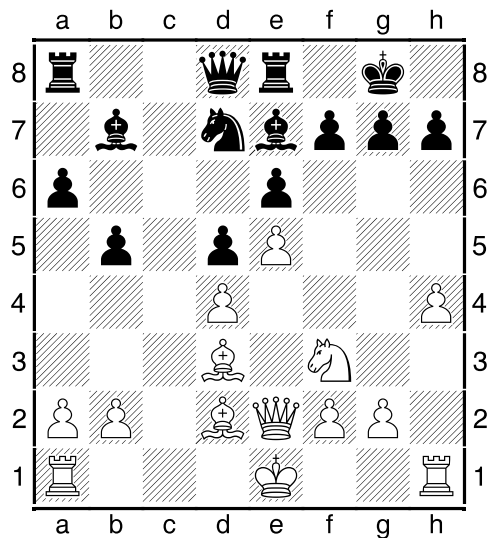
Wie kommt Weiß entscheidend in Vorteil?



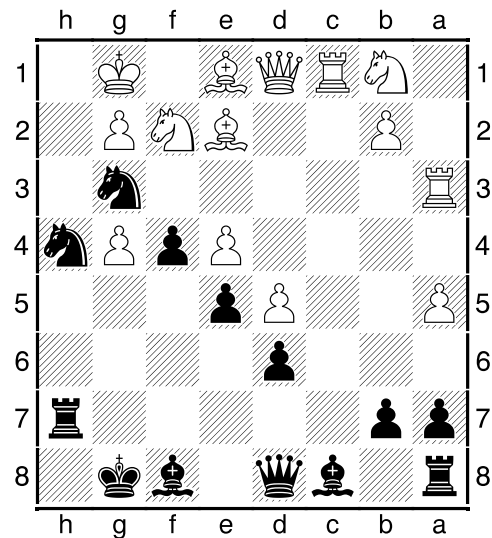
Weiß gewinnt



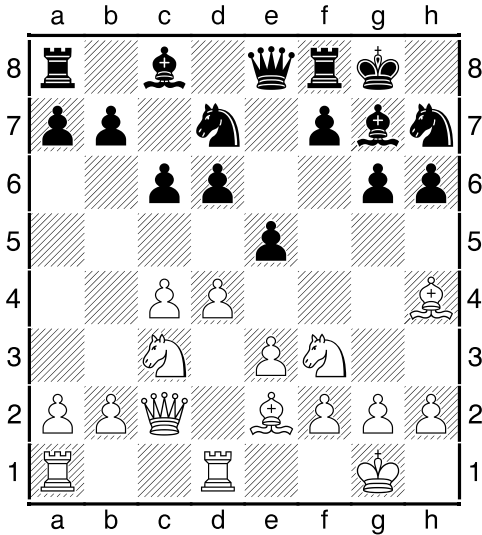
Schwarz gewinnt



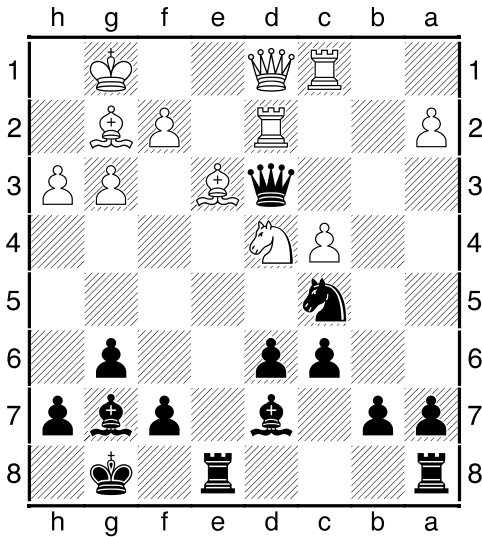
1.Lxh7 und gewinnt? Oder reicht es nur für 1/2?



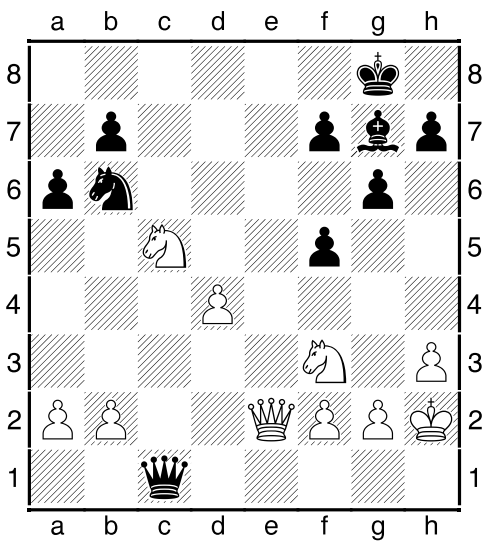
Schwarz beginnt einen heftigen Angriff. Wie?



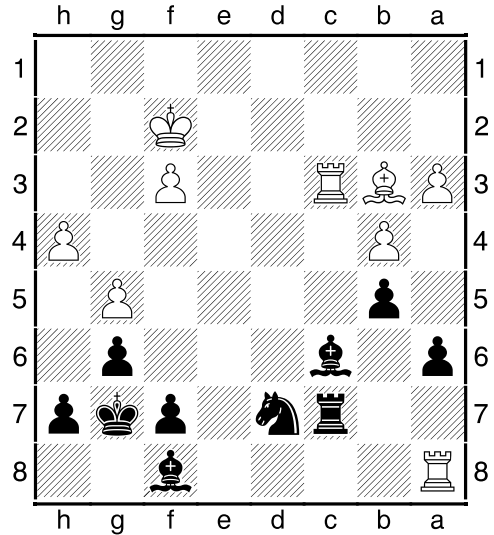
Der letzte schwarze Zug ...Sh7 erhielt zwei „?“
Warum?



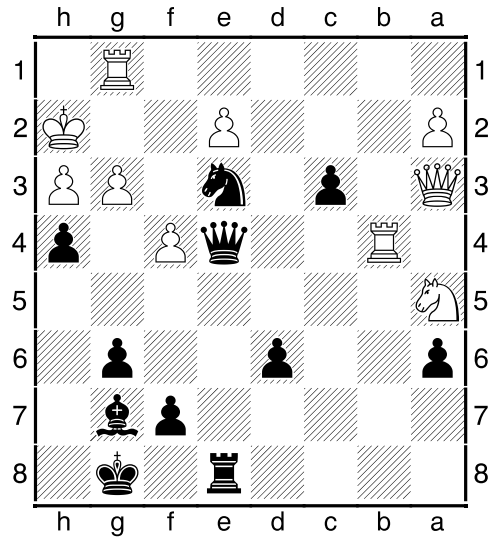
Und?



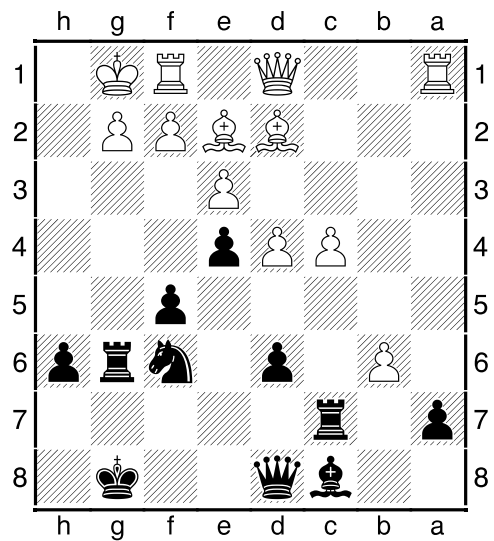
Darf Schwarz sich auf d4 bedienen?



Schwarz gewinnt



Schwarz gewinnt



Schwarz gewinnt